

South Kilburn Regeneration Programme

UNITY PLACE

(Formally known as Gloucester House & Durham Court)

PROJECT OVERVIEW

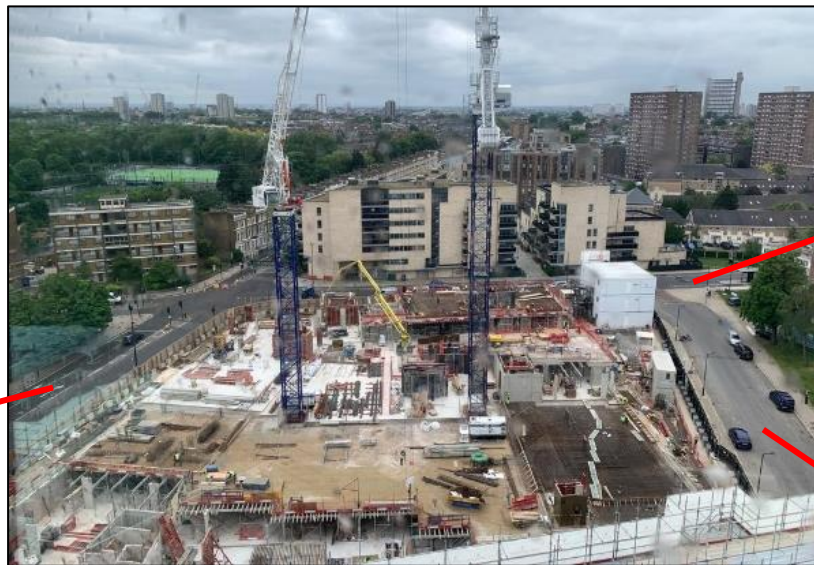
Telford Homes, Brent Council and Notting Hill Genesis are working in partnership on this major scheme within the South Kilburn Regeneration Programme. Gloucester House and Durham Court, which were opposite St. Augustine's Church is currently under redevelopment to deliver 235 new high-quality homes.

The scheme is likely to take 3 years to complete and will be handed over in phases from 2020.



View from Kilburn Park Road – opposite St Augustine's Church

WORKS IN PROGRESS



View from Tower Crane 1

External framing for windows and brick work is progressing in 5.3.

With window installation and brick work to the ground.

Roof finishes being progressed to all of site 5.



Internal 5.3

Site 4: Podium and first floor levels is ongoing with concrete slabs being poured.

Services are being installed, gas is now complete, with BT and water to follow.



View from Site

TELFORD HOMES – IN THE COMMUNITY

As some of you maybe aware Telford Homes ran an art competition within 3 local primary school, St. Mary's RC, Kilburn Park Primary, and St Augustine's. This art work has now been displayed and can be seen on the hoarding around site.



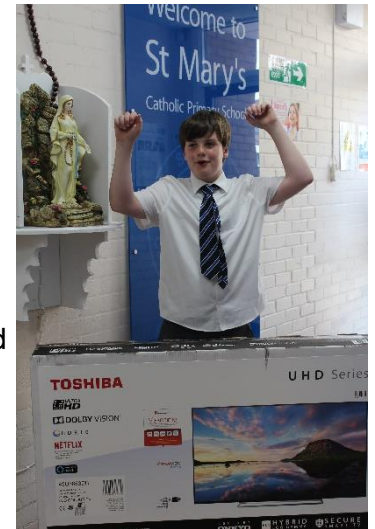
Telford's have been working with St. Augustine's High School on their Garden project



St. Mary's RC Primary School



Frank was the proud winner of a **Toshiba 49" Smart TV 4K Ultra HD TV**, donated by Telford Homes for the St. Mary's RC Primary School Summer Fete raffle.



CONTACT US

If you have any queries with regards the site please contact our Residents' Liaison Officer, Vanessa.

Her contacted details are as follows:

Email: rlo.gloucester&durham@telfordhomes.london

Telford Homes: 01992 809800

Website: www.gloucesteranddurham.co.uk

For any queries regarding Brent Council allocations please contact **South Kilburn Estate Regen Team:** 0208 937 6140 or 6904 or

Email: ersk@brent.gov.uk

EMPLOYMENT OPPORTUNITIES FOR LOCAL PEOPLE

Telford Homes is committed to working in partnership with Brent Works and the South Kilburn Trust to make opportunities available to local people through apprenticeships, trainee programmes and work experience placements.

We run 2-5 year trainee programmes across our Engineering, Site Management and technical departments and we are currently recruiting.

Please visit our website for more details www.telfordhomes-ir.london/careers or call our training and development team on 01992 809800.

SITE WORKING HOURS

Monday to Friday: 8am - 6pm - Saturday: 8am - 1pm (occasional)

Site working hours are closely monitored. In some circumstances works or deliveries may be made outside of the normal hours. Where possible, we will inform local residents and businesses in advance of these activities.

