

South Kilburn Regeneration Programme

Gloucester House & Durham Court

PROJECT OVERVIEW

Telford Homes, Brent Council and Notting Hill Genesis are working in partnership on this major scheme within the South Kilburn Regeneration Programme. Gloucester House and Durham Court, which were opposite St. Augustine’s Church, and the existing site is currently under redevelopment to deliver 235 new high-quality homes.

The scheme is likely to take 3 years to complete and will be handed over in phases from 2020.



View from Kilburn Park Road – opposite St Augustine’s Church

WORKS IN PROGRESS

The new development has been named **UNITY PLACE**

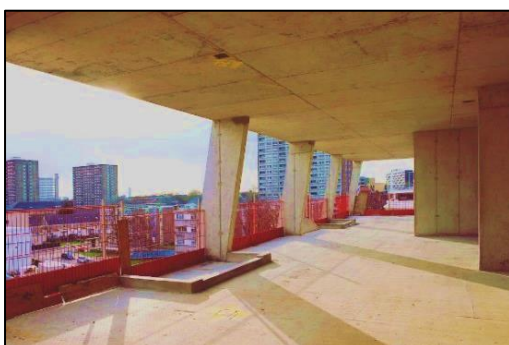


The scaffold to buildings 5.1, 2 and 4 are complete, and window installation to these are on-going.

The brick work has commenced to the ground floor level to 5.1 and 5.2.

Site 4: Basement slab is progressing with the energy centre walls and columns in progress.

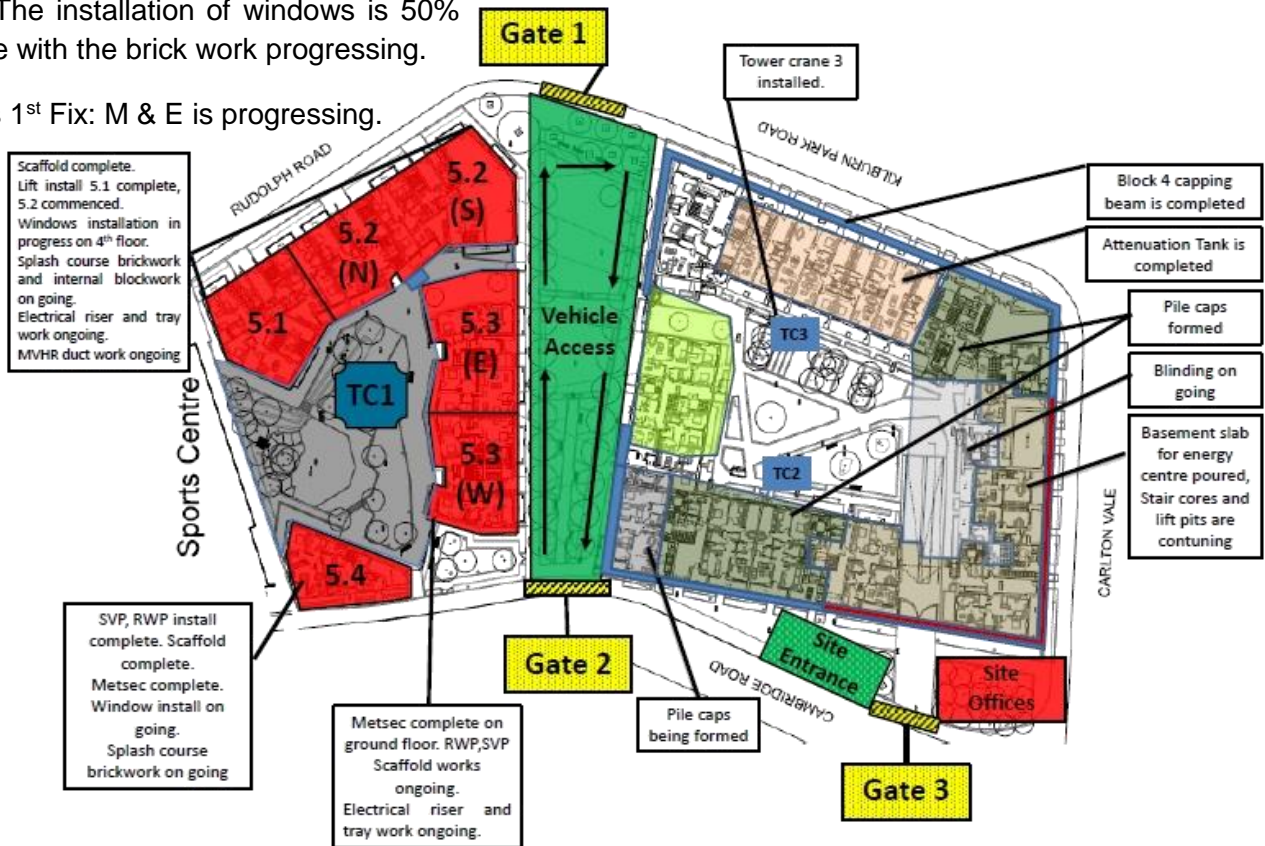
Works to the underground works are progressing and the a ttenuation tank is completed.



UPCOMING WORKS - APRIL - JUNE 2019

Site 5: The installation of windows is 50% complete with the brick work progressing.

Internals 1st Fix: M & E is progressing.



Site 4: Excavation has begun for the underground car park, and reinforcement to the ground floor slab will commence in early 2019.

Basement slab and walls have commenced to the energy centre.

Tower Crane 3 is now operational.

CONTACT US

If you have any queries with regards the site please contact our Residents' Liaison Officer, Vanessa.

Her contacted details are as follows:

Email: rl.goucester&durham@telfordhomes.london

Telford Homes: 01992 809800

Website: www.goucesteranddurham.co.uk

For any queries regarding Brent Council allocations please contact **South Kilburn Estate Regen Team:** 0208 937 6140 or 6904 or

Email: ersk@brent.gov.uk

EMPLOYMENT OPPORTUNITIES FOR LOCAL PEOPLE

Telford Homes is committed to working in partnership with Brent Works and the South Kilburn Trust to make opportunities available to local people through apprenticeships, trainee programmes and work experience placements.

We run 2-5 year trainee programmes across our Engineering, Site Management and technical departments and we are currently recruiting.

Please visit our website for more details www.telfordhomes-ir.london/careers or call our training and development team on 01992 809800.

SITE WORKING HOURS

Monday to Friday: 8am - 6pm - Saturday: 8am - 1pm (occasional)

Site working hours are closely monitored. In some circumstances works or deliveries may be made outside of the normal hours. Where possible, we will inform local residents and businesses in advance of these activities.

